



**The Ecumenical Parish of
St Andrew's Church, Carters Green, West Bromwich**
STATEMENT OF SIGNIFICANCE



St Andrew's, Carters' Green, West Bromwich is a Church of England building housing an Ecumenical Partnership between that Church and the Methodist Church.



Location

Post Code: B70 9LR

St Andrew's is a prominent building situated at the junction of Dudley Street and Carters' Green (on the main approach to West Bromwich High Street from the north-west). The building is clearly visible from the A41 Black Country Spine Road where it joins the A4196 (Old Meeting Street/Black lake) at the Albion Island.

History

The present building was built in the 1920's and considerably extended by lengthening the Nave in the 1930's.

In the 1980's an extension was added to provide kitchen facilities and toilets together with, on the first floor, an office area and meeting room.

Ecumenical Partnership

In 1984 the members of Swan Village Methodist Church joined St Andrew's. The relationship has developed into a single congregation Ecumenical Partnership.





St Andrew's is actively involved with both the West Bromwich Deanery and the West Bromwich Circuit. Mutual recognition of ministry is now practiced and the Vicar is an active member of the Methodist ministerial team. The Methodist Presbyterian Minister is regarded as Associate Minister at St Andrew's. St Andrew's also values the ministry of a Methodist Diaconal Minister as part of the pastoral team.



Worship

Sunday Worship at St Andrew's takes place at 9.30am and is Eucharistic. Although worship is usually Anglican in style St Andrew's has adopted the Methodist practice of "receiving by tables" at the time of Communion.

Those at the communion rail remain in place until all having received and are then dismissed with a prayer. Worship is usually attended by upwards of fifty persons.

There is an active Junior Church meeting at the same time as the main act of worship. On the first Sunday of each month the service is a Family Service, in the context of the Eucharist, with the Junior Church present. This is usually followed by a service of Baptism at 11.15 am.

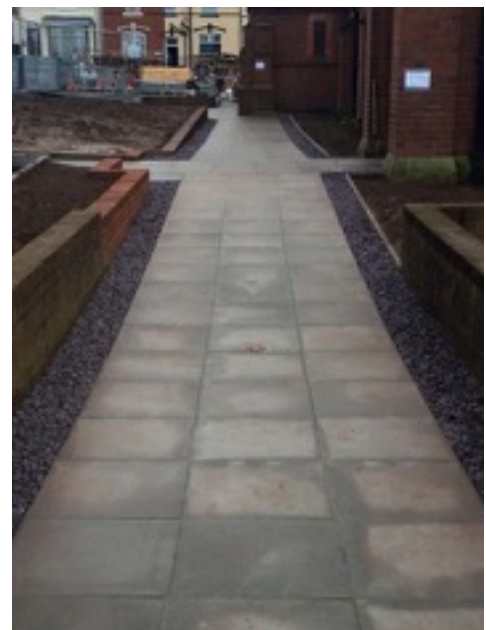


Setting

The liturgical setting is traditional with a central nave divided from the side aisles by four arches. A further arch divides the chancel from a Lady Chapel on one side and the organ on the other. There is a dual screen projection system installed. Seating is 100 upholstered chairs at the front of the nave. The rear of the nave is clear for social events and can be divided from the rest of the building by curtains.

There is an attached two storey Church Centre with kitchen, toilets, office and meeting room.

In 2015 a solar panel installation was installed on the roof, in partnership with 'Power for Good', an co-operative. St Andrew's has a financial investment of £1000 in Power for Good. Also in 2015 the churchyard paths were realised and the main access ramped as part of car park and landscaping works at the adjacent YMCA.



Church Activities

St Andrew's is home to the Boys Brigade and Girls Association, and it's junior branch Anchor Boys and Girls. These meet on Tuesday evenings. There is a thriving Teddy Bear Club on Wednesday mornings for pre-school aged children and their parents/carers. St Andrew's has an active Mothers' Union Branch and a Ladies Fellowship. On Monday and Thursday mornings St Andrew's holds Open Door, with tea and coffee available. At the same time a Keep Fit Group meet in church



Community Links

St Andrew's Church

Dudley Street, Carlers Green
Invites you to Pub Carols:

Thursday 15th December 8pm
The Old Hop Pole, High Street

Thursday 22nd December 8pm
The Wheatsheaf, High Street

Friday 23rd December 8pm
The Sow and Pigs, Hill Top

(see overleaf for church services)

West Bromwich and District YMCA is located adjacent to St Andrew's. It carries out a range of community provision including; accommodation of young people; a Healthy Living Centre comprising Cafe, Gym and sports facilities; computer skills training; and a large Childcare Centre. As part of the redevelopment of the YMCA consideration is being given to better use of the area of grass and shrubbery that divides their site from St Andrew's.

Christmas Services **St Andrew's Church**

Dudley Street, Carlers Green

Sunday 18th December 4pm
Christingle (Children's Service)

Monday 19th December 7pm
Carols by Candlelight

Christmas Eve 11.30pm
Midnight Mass of the Nativity

(see overleaf for pub carols)

St Andrew's has links with Ryders' Green Primary School and other schools. School groups make regular visits to St Andrew's and an information pack has been specifically written for the use of teachers. The school holds it's annual Christmas Concert in church.

There are strong links with other community groups for example at Christmas Pub Carol events are held at three local establishments. These are advertised by giving supplies of beer mats to each pub.

