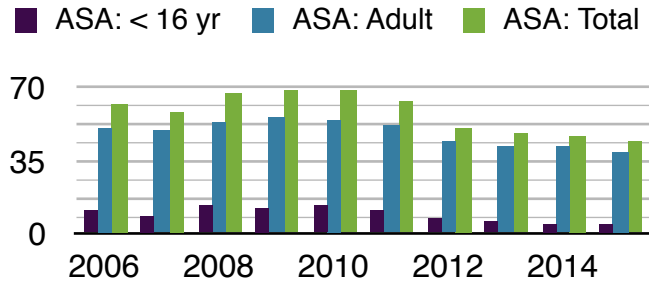


Average Sunday Attendance:
The trend has stabilised

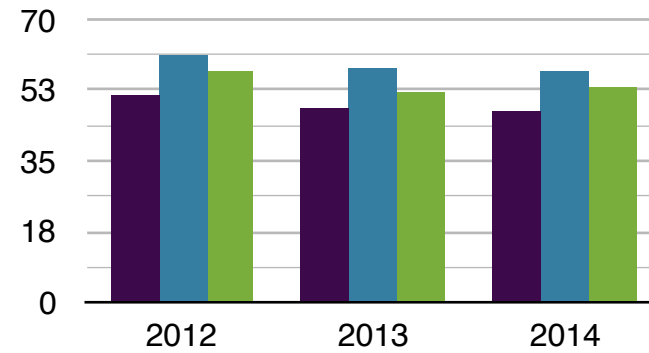
Analysis:

The rapid decline in 2010 - 2012 has now stabilised with 2012 - 2014 showing very little change.



Normal Sunday compared with Family Service

- Normal
- Family Service
- Without Easter/Awards

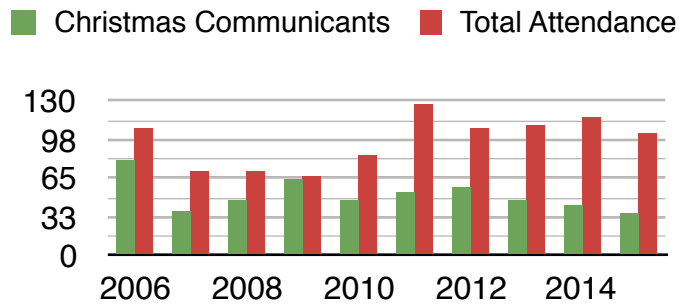


Christmas Attendance
The trend is growth

Analysis:

Although the number of Christmas communicants has dropped for the third successive year however, in the same time period, the overall attendance has increased.

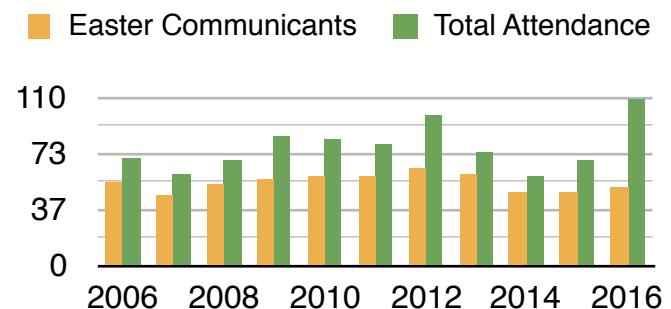
From 2013 the figures represent a Christmas Eve Crib Service and Midnight Mass, the Christmas morning service having ceased after 2012. Although Christmas Eve is down in 2015, the Carol Service (21/12), Crib Service and Pub carols were all increased attendances.



Easter Attendance
The trend is stable

Analysis:

Easter 2015 saw a slight increase in overall attendance, while communicant numbers were level. In 2016 there was a baptism in the service giving a higher total attendance.

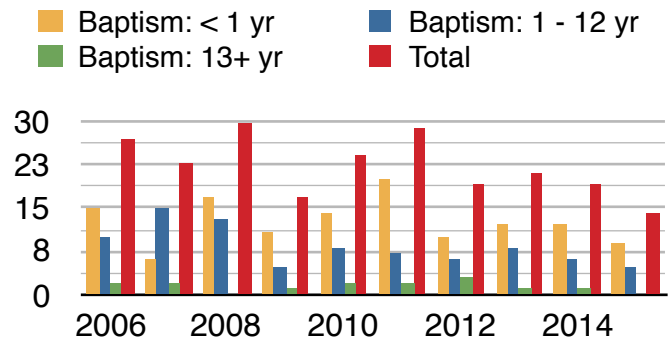


Baptisms

The trend has irregular

Analysis:

The total number of baptisms conducted dipped during 2015 after being stable. St Andrew's operates an open baptism policy with minimal instruction. Baptisms are drawn from local contacts in the toddler group, schools, pubs and elsewhere in addition to those seeking the ministry of their Parish Church.

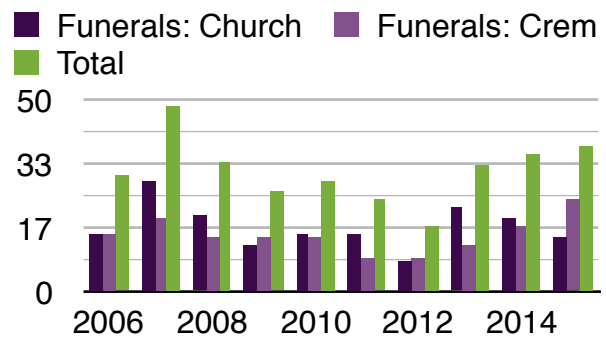


Funerals

The trend is increasing

Analysis:

A high proportion of funerals are held in church prior to committal as a good proportion of the local population identify with St Andrew's as "their church". The number in church includes those taken at St Andrew's by Methodist colleagues (6 funerals in 2014).

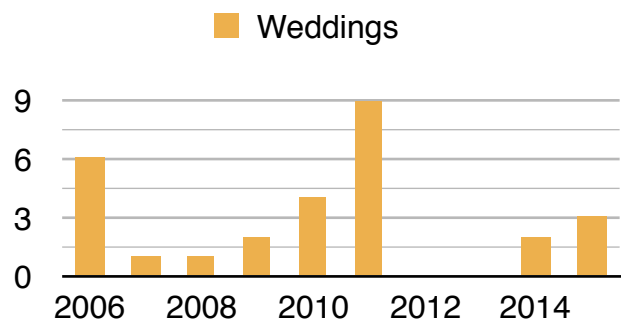


Weddings

The trend is irregular

Analysis:

St Andrew's saw a steady increase in the number of weddings over several years. None were conducted in 2012 or 2013, three in 2015 and five booked for 2016.

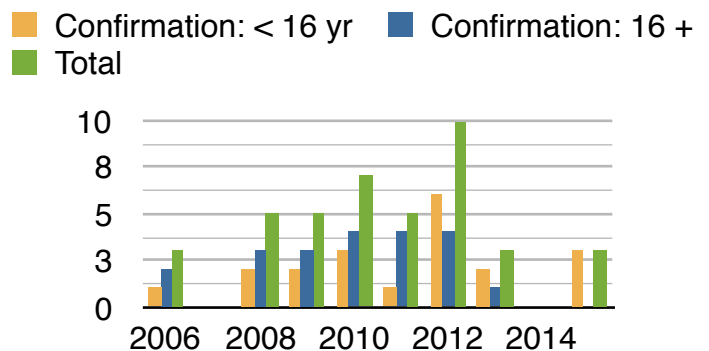


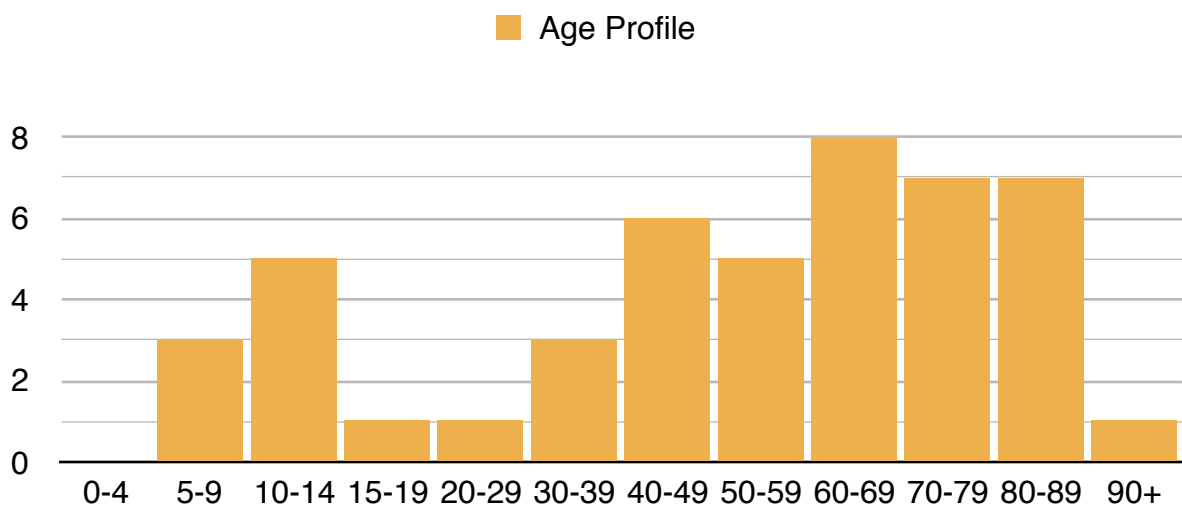
Confirmation and Membership

The trend is stable

Analysis:

Over several years the majority of those Confirmed and Admitted to Membership were adults. After a high number of candidates in 2012, three were confirmed in 2013. There were none in 2014. There were three in 2015.





The Age Profile as surveyed at Easter 2011